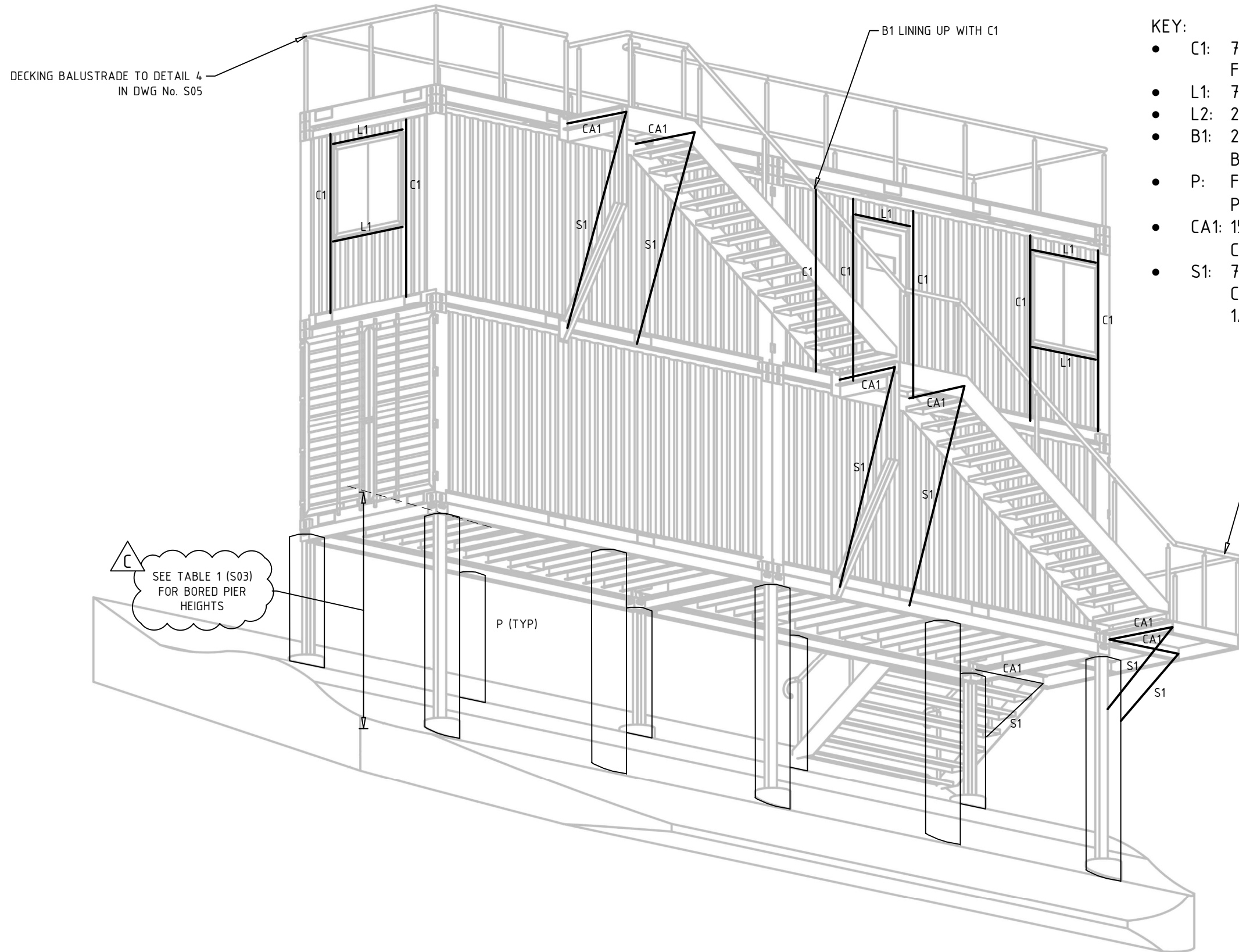


- KEY:
- C1: 75SHS4.0 COLUMN 3mm CFW TO CONTAINER FRAME.
 - L1: 75SHS4.0 LINTEL 4mm CFW TO C1.
 - L2: 2/125x75x5.0 RHS LINTEL 4mm CFW TO C1.
 - B1: 250UB37 WELDED TO PREFAB. DECK BEARERS AS PER DETAIL 2 (S03).
 - P: FULL HEIGHT $\phi 600$ mm CONCRETE BORED PIERS TO DETAIL 1 (S03).
 - P2: $\phi 600$ mm CONCRETE BORED PIER TO DETAIL 1.
 - CA1: 150UC30 CANTILEVER BEAM CONNECTED TO CONTAINER FRAME TO DETAIL 3 (S04)

<p>STRUCTURAL ENGINEERS</p>  <p>COOT CONSULTING ENGINEERS</p>	<p>UNIT 2 / 23 BENTHAM STREET YARRALUMLA ACT 2600 CONTACT LINDEN COOT PH (02) 6282 4620 linden@cootengineers.com.au</p>	<p>CLIENT BLUEY TECHNOLOGIES SUITE 609 55 MILLER ST PYRMONT NSW 2009 CONTACT: DANIEL BOSCO MOB: 0402 229 025 EMAIL: daniel.bosco@bluey.com.au</p>	<p>PROJECT TOPPA'S JUDGE TOWER BLUE COW MOUNTAIN PERISHER VALLEY NSW 2624</p>	<p>TITLE FRONT ISOMETRIC VIEW</p> <table border="1"> <thead> <tr> <th>DESIGN</th> <th>DRAWN</th> <th>DATE</th> <th>DRG NO.</th> </tr> </thead> <tbody> <tr> <td>LC</td> <td>FC</td> <td>06-05-2022</td> <td>S01C</td> </tr> </tbody> </table>	DESIGN	DRAWN	DATE	DRG NO.	LC	FC	06-05-2022	S01C
DESIGN	DRAWN	DATE	DRG NO.									
LC	FC	06-05-2022	S01C									



KEY:

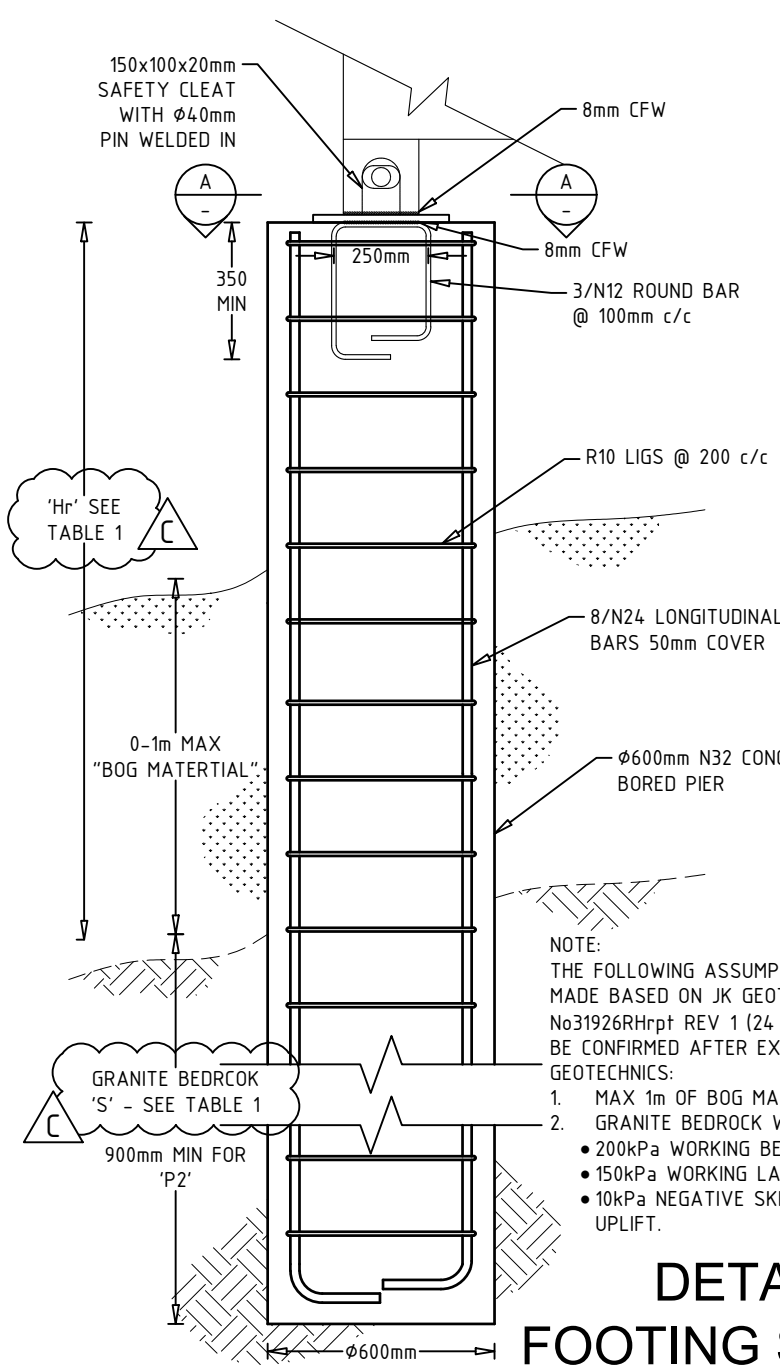
- C1: 75SHS4.0 COLUMN 3mm CFW TO CONTAINER FRAME.
- L1: 75SHS4.0 LINTEL 4mm CFW TO C1.
- L2: 2/125x75x5.0 RHS LINTEL 4mm CFW TO C1.
- B1: 250UB37 WELDED TO PREFAB. DECK BEARERS AS PER DETAIL 2 (S03).
- P: FULL HEIGHT ϕ 600mm CONCRETE BORED PIERS TO DETAIL 1 (S03).
- CA1: 150UC30 CANTILEVER BEAM CONNECTED TO CONTAINER FRAME TO DETAIL 3 (S04)
- S1: 75SHS5.0 STRUT. CONNECT WITH 8mm THICK CLEAT 5mm CFW TO CONTAINER FRAME & 1/M16 8.8 BOLT

WELDLOK BALLTUBE
BALUSTRADE. HEAVY DUTY
STANCHIONS @ 1500mm c/c MAX

SEE TABLE 1 (S03)
FOR BORED PIER
HEIGHTS

<p>STRUCTURAL ENGINEERS</p>  <p>UNIT 2 / 23 BENTHAM STREET YARRALUMLA ACT 2600 CONTACT LINDEN COOT PH (02) 6282 4620 linden@cootengineers.com.au</p>	<p>CLIENT BLUEY TECHNOLOGIES SUITE 609 55 MILLER ST PYRMONT NSW 2009 CONTACT: DANIEL BOSCO MOB: 0402 229 025 EMAIL: daniel.bosco@bluey.com.au</p>	<p>PROJECT TOPPA'S JUDGE TOWER BLUE COW MOUNTAIN PERISHER VALLEY NSW 2624</p>	<p>TITLE REAR ISOMETRIC VIEW</p> <table border="1"> <tr> <td>DESIGN</td> <td>DRAWN</td> <td>DATE</td> <td>DRG NO.</td> </tr> <tr> <td>LC</td> <td>FC</td> <td>06-05-2022</td> <td>S02C</td> </tr> </table>	DESIGN	DRAWN	DATE	DRG NO.	LC	FC	06-05-2022	S02C
DESIGN	DRAWN	DATE	DRG NO.								
LC	FC	06-05-2022	S02C								

**ISSUED FOR
CONSTRUCTION**



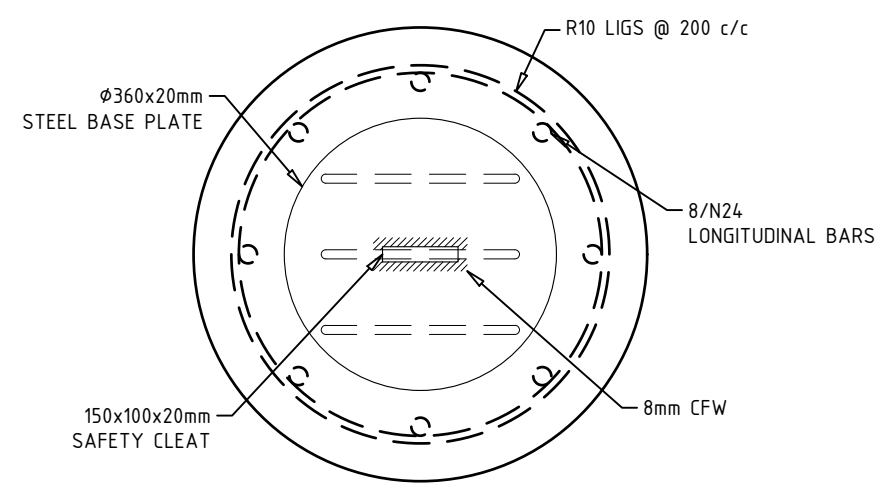
**TABLE 1 - PIER HEIGHT (Hr)
AND SOCKET (S)**

Bored pier diam. [mm]	Hr max [m]	S min [m]
600	2.0	1.8
600	2.5	2
600	3	2.2
600	>3	not suitable

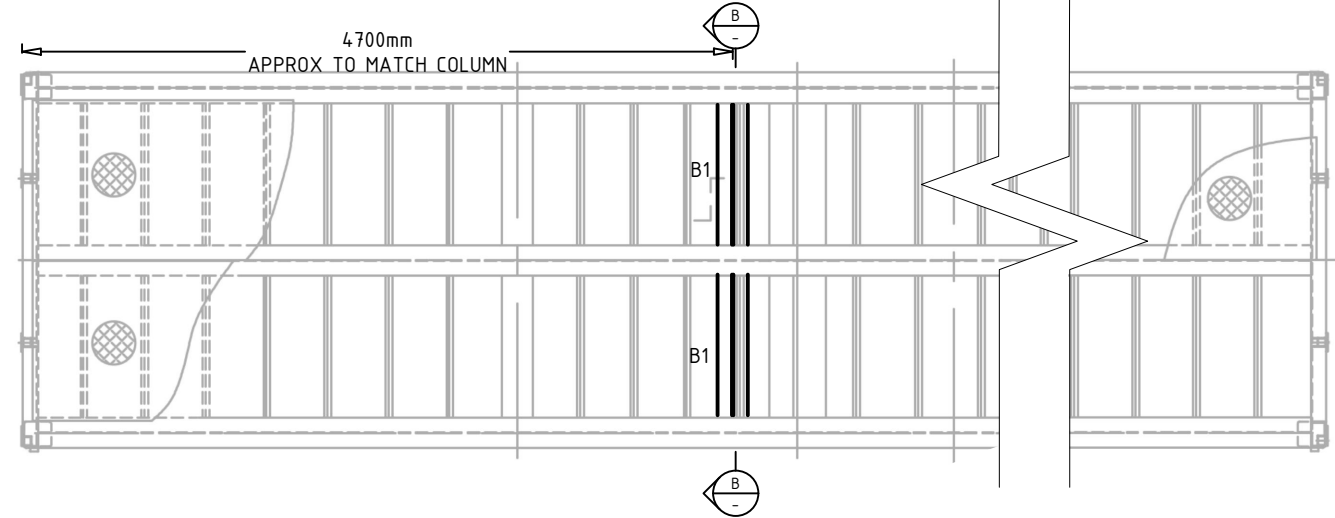
**DETAIL 1
FOOTING SECTION
1:20 @ A3**

NOTE:
THE FOLLOWING ASSUMPTIONS HAVE BEEN MADE BASED ON JK GEOTECHNICS REPORT REF No31926RHrpt REV 1 (24 JUNE 2019) & NEED TO BE CONFIRMED AFTER EXCAVATION BY JK GEOTECHNICS:

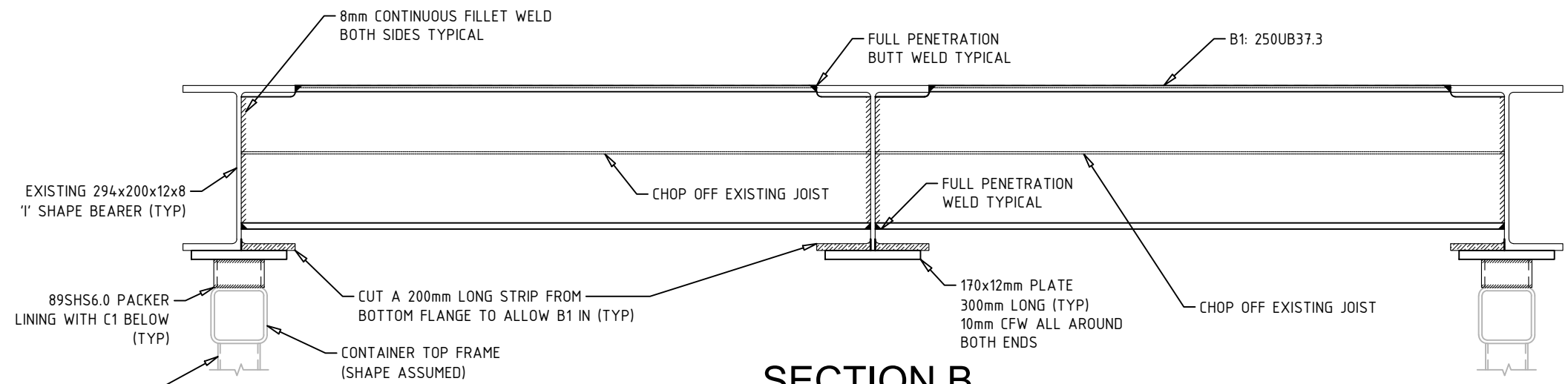
- MAX 1m OF BOG MATERIAL.
- GRANITE BEDROCK WITH CAPACITY OF:
 - 200kPa WORKING BEARING STRENGTH
 - 150kPa WORKING LATERAL RESISTANCE
 - 10kPa NEGATIVE SKIN FRICTION FOR UPLIFT.



**SECTION A
1:10 @ A3**



**DETAIL 2
PREFABRICATED DECK ALTERATION
PLAN VIEW
1:50 @ A3**



**SECTION B
1:10 @ A3**

STRUCTURAL ENGINEERS
COOT
CONSULTING ENGINEERS
Coot Consulting Engineers
Unit 2 / 23 Bentham Street
Yarralumla ACT 2600
CONTACT LINDEN COOT
02 6282 4620
linden@cootengineers.com.au

CLIENT
BLUEY TECHNOLOGIES
SUITE 6.09 55 MILLER ST
PYRMONT NSW 2009
PH 02 9807 2207
EMAIL SYDNEY@BLUEY.COM.AU
CONTACT: DANIEL BOSCO
MOB 0402 229 025
EMAIL DANIEL.BOSCO@BLUEY.COM.AU

PROJECT
TOPPA'S JUDGE TOWER
BLUE COW MOUNTAIN
PERISHER VALLEY NSW 2624

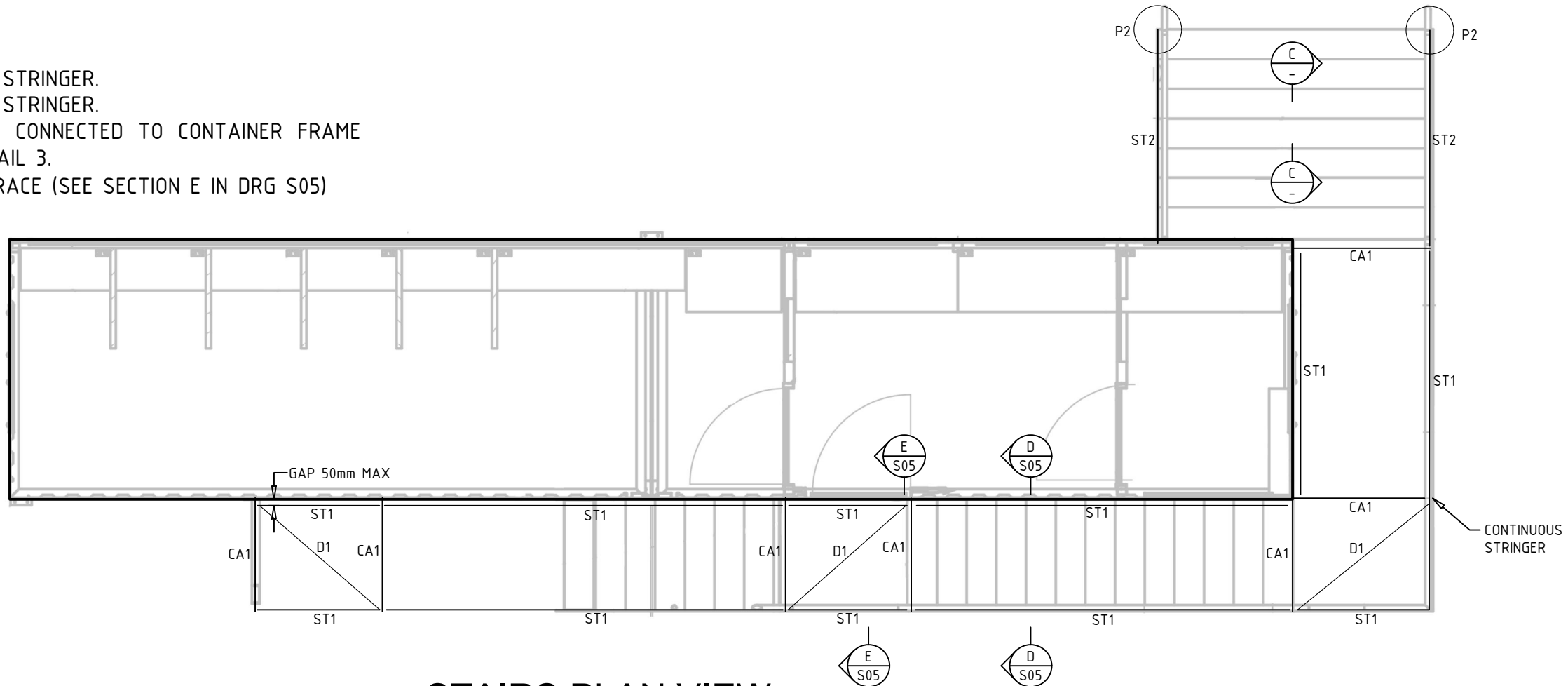
TITLE
DETAILS 1/3

DESIGN	DRAWN	DATE	DRG NO.
LC	FC	06/05/2022	S03C

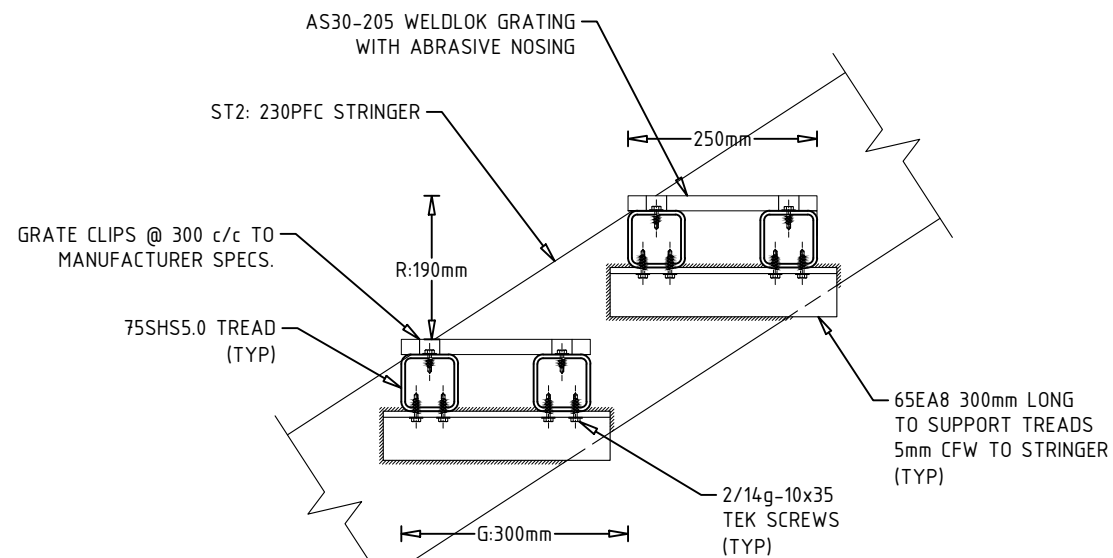
**ISSUED FOR
CONSTRUCTION**

KEY:

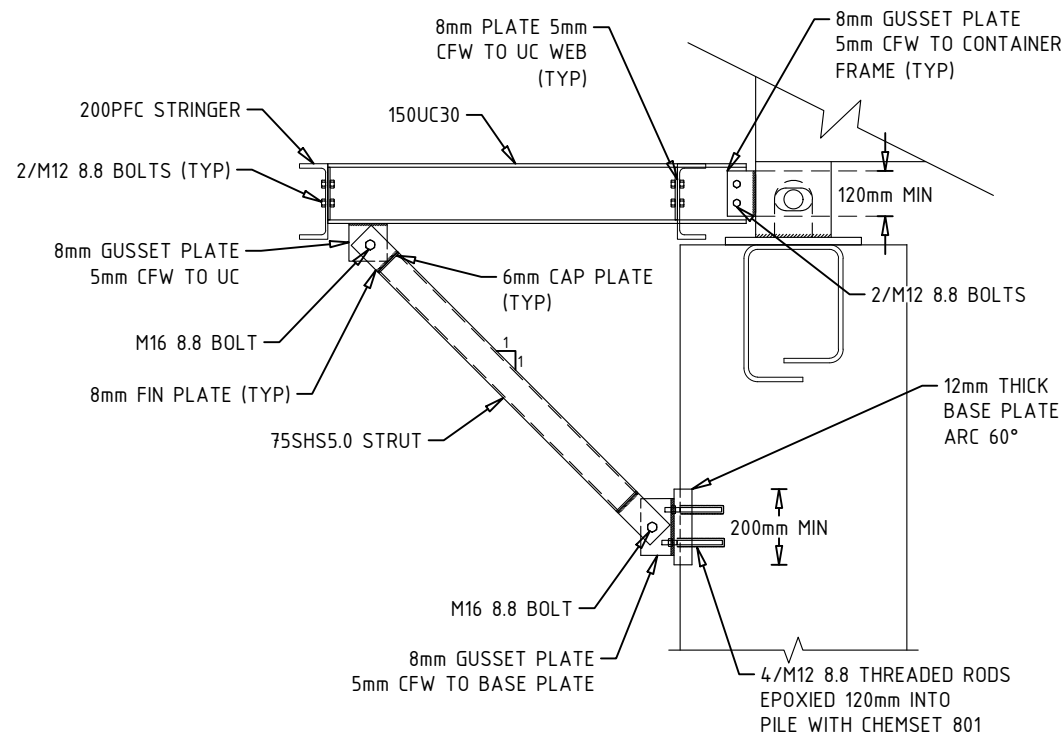
- ST1: 200PFC STRINGER.
- ST2: 230PFC STRINGER.
- CA1: 150UC30 CONNECTED TO CONTAINER FRAME TO DETAIL 3.
- D1: 50EA5 BRACE (SEE SECTION E IN DRG S05)




**STAIRS PLAN VIEW
1:50 @ A3**



**SECTION C
1:10 @ A3**



**DETAIL 3
150UC CONNECTION
1:20 @ A3**

STRUCTURAL ENGINEERS

COOT
 CONSULTING ENGINEERS
 Coot Consulting Engineers
 Unit 2 / 23 Bentham Street
 Yarralumla ACT 2600
 CONTACT LINDEN COOT
 02 6282 4620
 linden@cootengineers.com.au

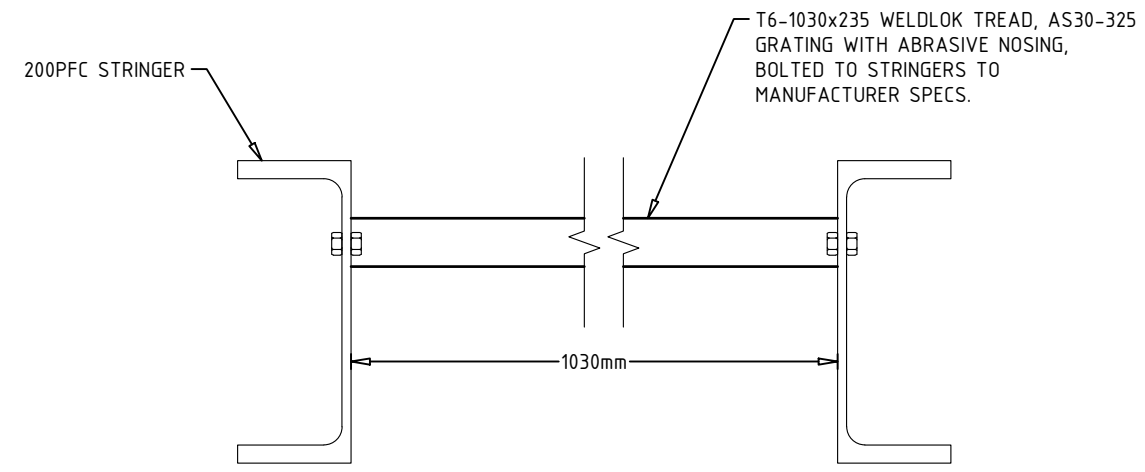
CLIENT
BLUEY TECHNOLOGIES
 SUITE 6.09 55 MILLER ST
 PYRMONT NSW 2009
 PH 02 9807 2207
 EMAIL SYDNEY@BLUEY.COM.AU
 CONTACT: DANIEL BOSCO
 MOB 0402 229 025
 EMAIL DANIEL.BOSCO@BLUEY.COM.AU

PROJECT
TOPPA'S JUDGE TOWER
 BLUE COW MOUNTAIN
 PERISHER VALLEY NSW 2624

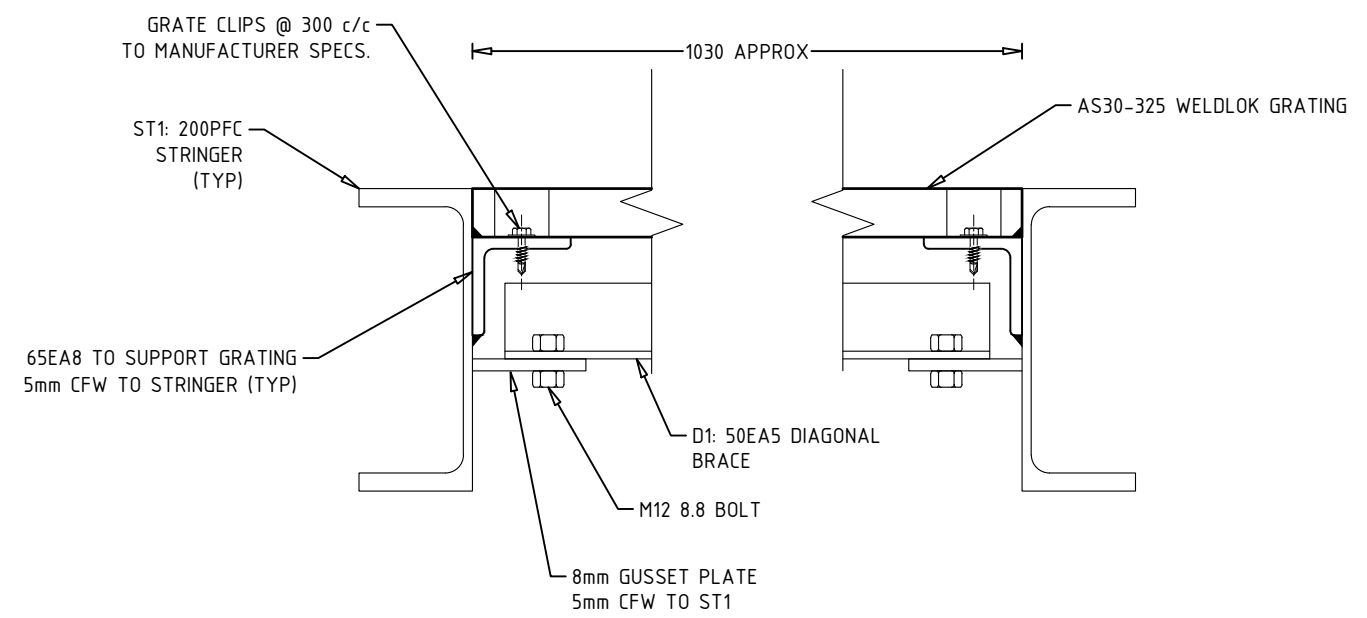
TITLE
STAIRS PLAN VIEW & DETAILS 2/3

DESIGN	DRAWN	DATE	DRG NO.
LC	FC	21/05/2020	S04B

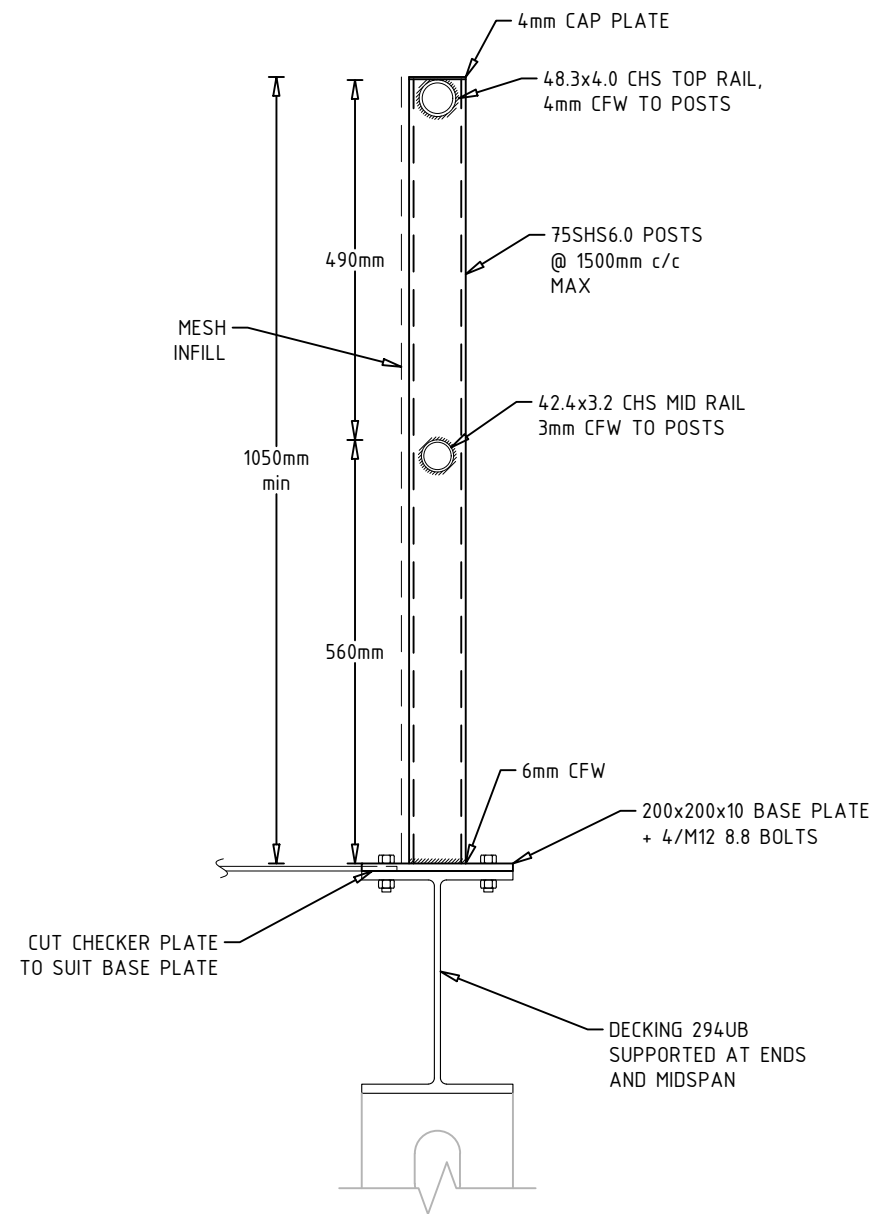
ISSUED FOR
CONSTRUCTION



SECTION D (S04)
UPPER STAIRS CROSS SECTION
1:5 @ A3



SECTION E (S04)
LANDINGS CROSS SECTION
1:5 @ A3



DETAIL 4
DECK BALUSTRADE
1:10 @ A3

STRUCTURAL ENGINEERS



COOT
CONSULTING
ENGINEERS

Coot Consulting Engineers
Unit 2 / 23 Bentham Street
Yarralumla ACT 2600
CONTACT LINDEN COOT
02 6282 4620
linden@cootengineers.com.au

CLIENT
BLUEY TECHNOLOGIES
SUITE 6.09 55 MILLER ST
PYRMONT NSW 2009
PH 02 9807 2207
EMAIL SYDNEY@BLUEY.COM.AU
CONTACT: DANIEL BOSCO
MOB 0402 229 025
EMAIL DANIEL.BOSCO@BLUEY.COM.AU

PROJECT
TOPPA'S JUDGE TOWER
BLUE COW MOUNTAIN
PERISHER VALLEY NSW 2624

TITLE
SECTIONS & DETAILS
3/3

DESIGN	DRAWN	DATE	DRG NO.
LC	FC	21/05/2020	S05B